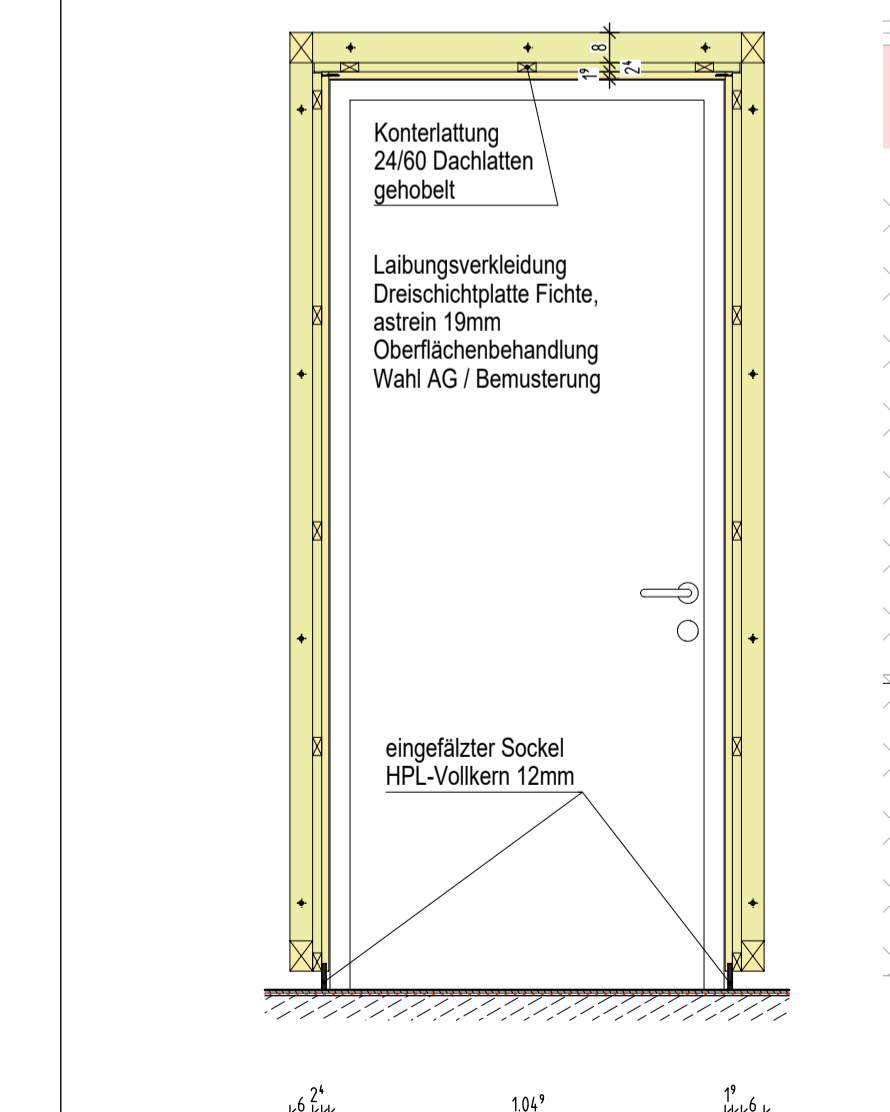
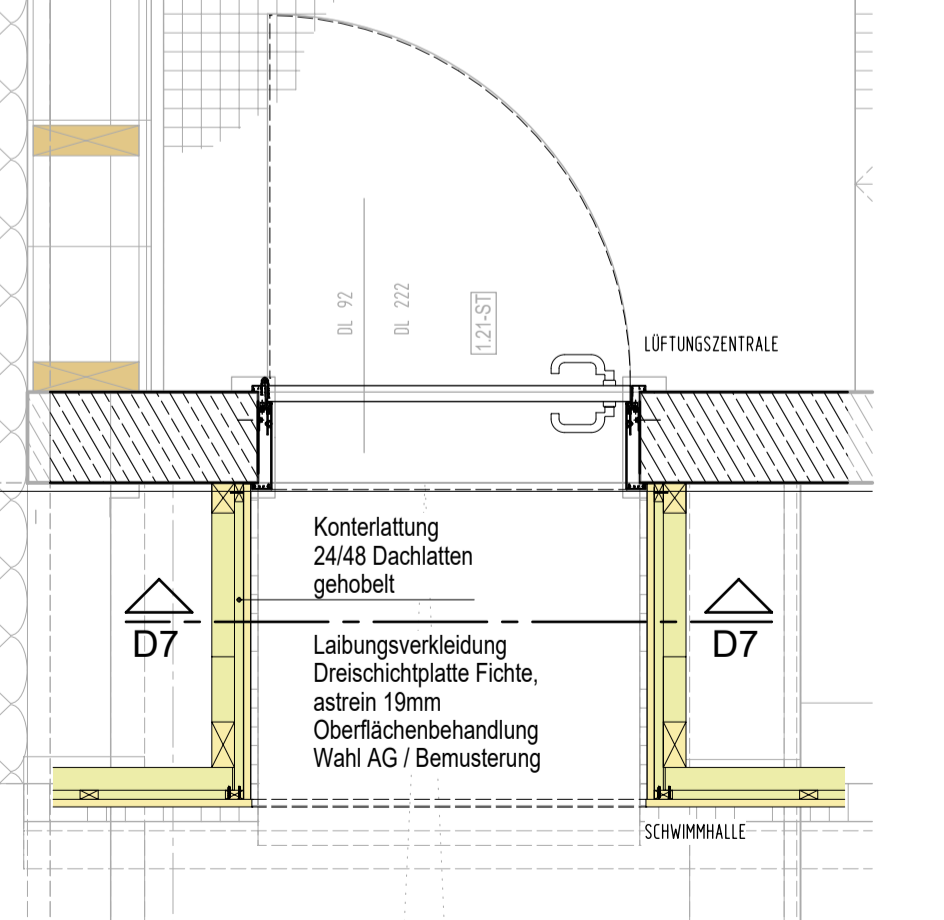
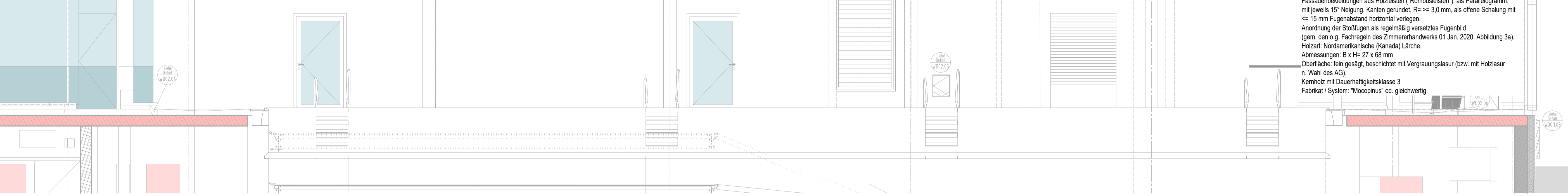
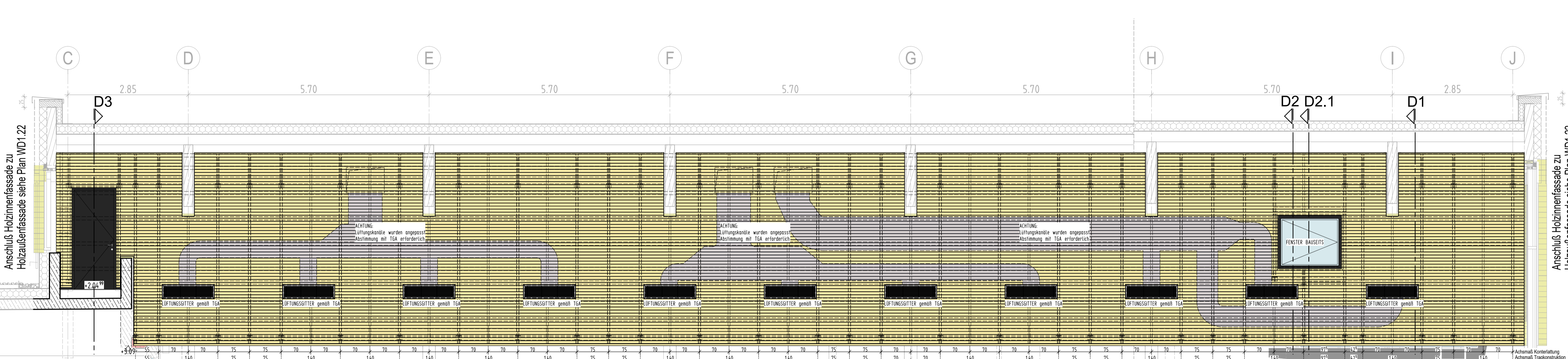


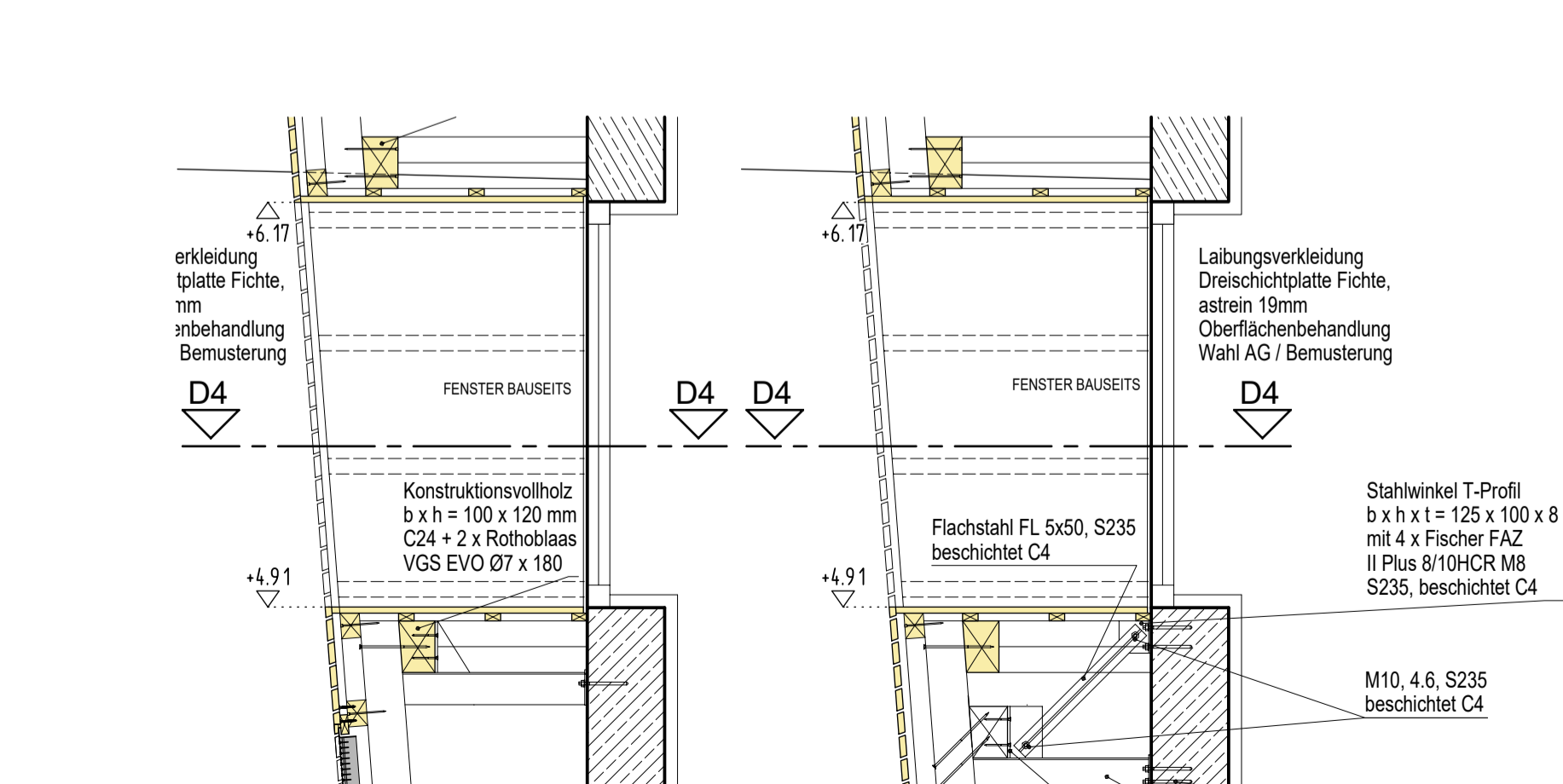
SCHNITT D3 - M 1:20



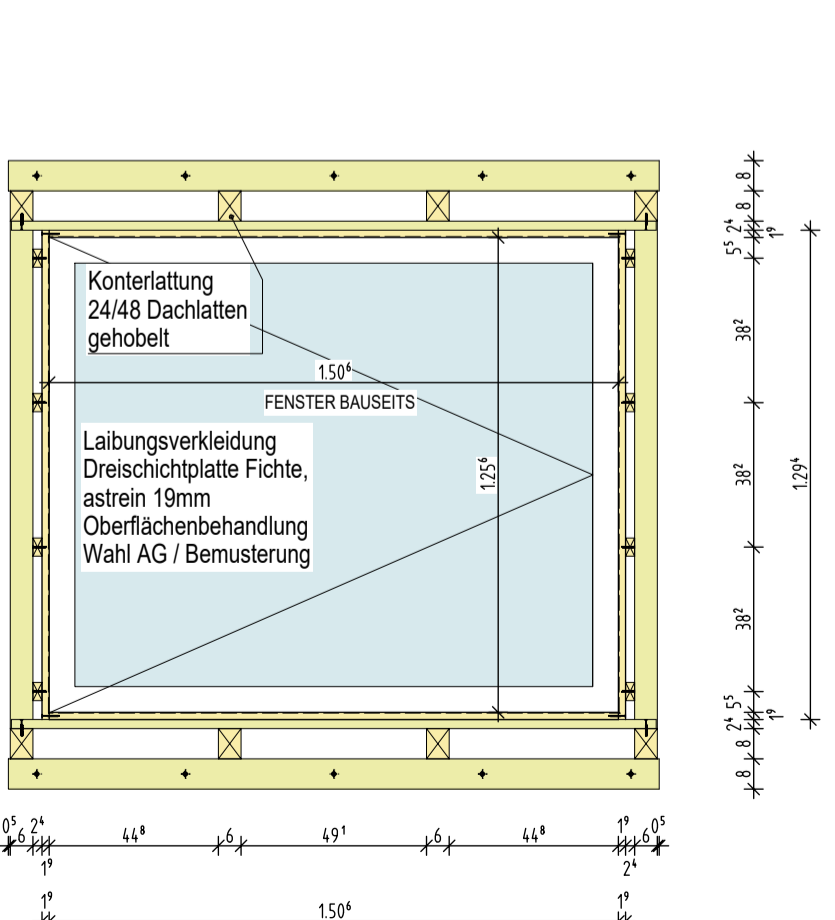
SCHNITT D7 - M 1:20



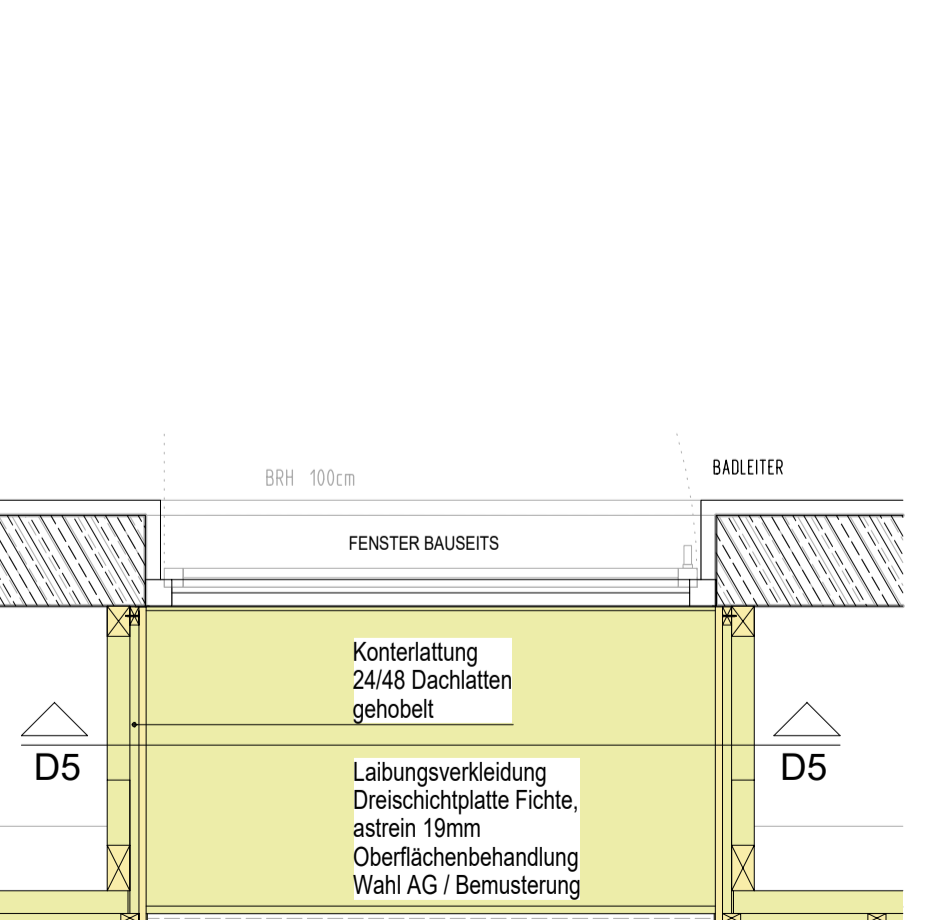
SCHNITT D6 - M 1:20



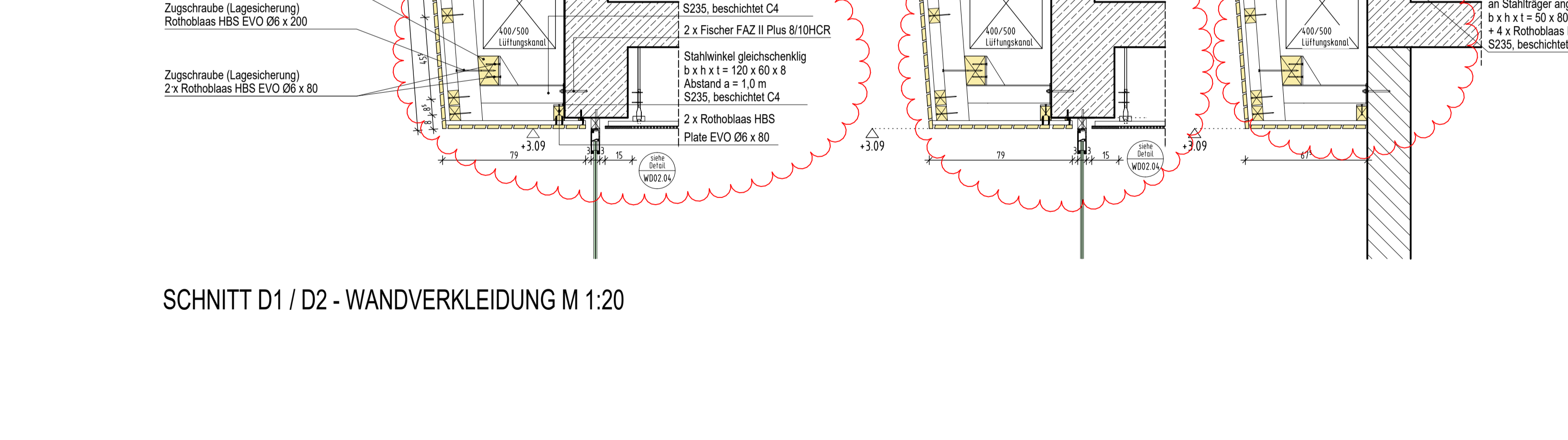
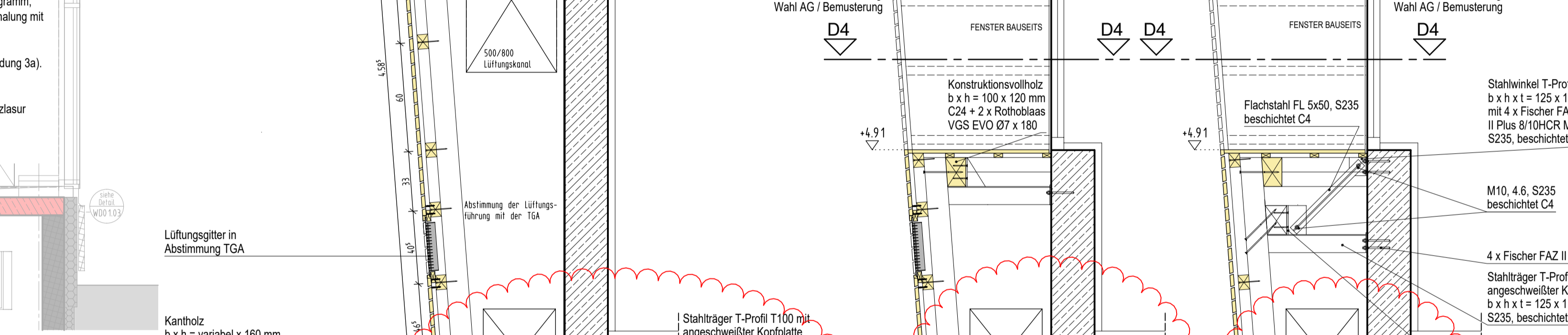
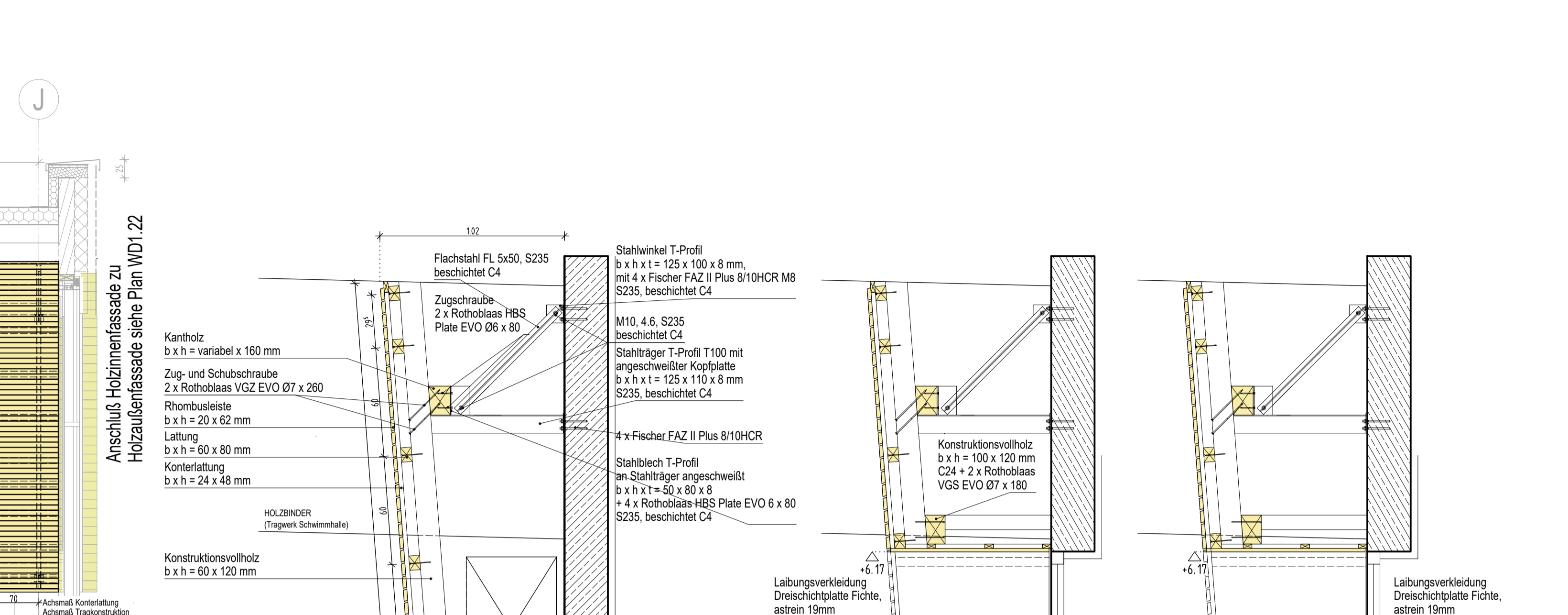
SCHNITT D5 - M 1:20



SCHNITT D4 - M 1:20

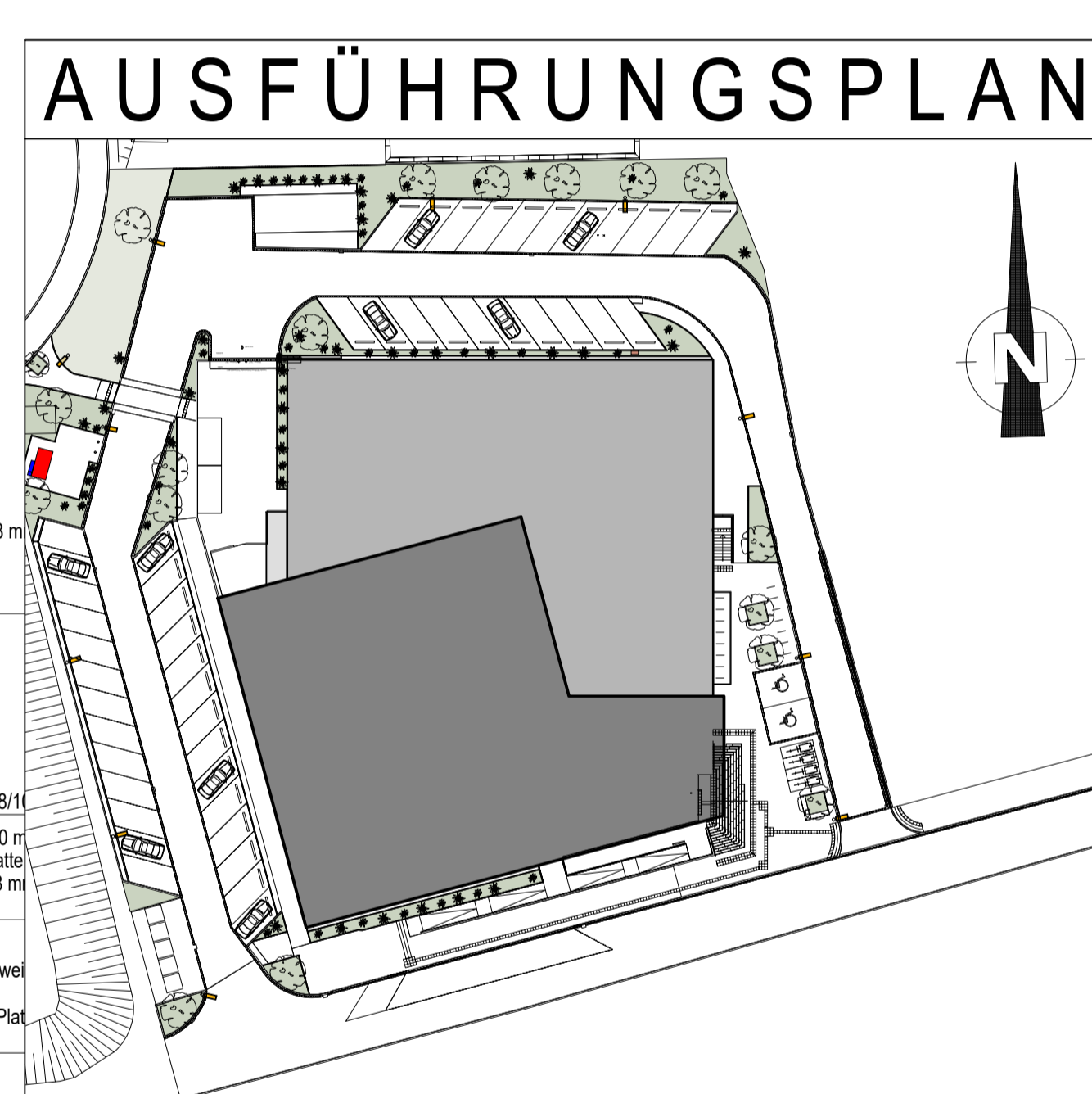


SCHNITT D5 - M 1:20



SCHNITT D1 / D2 - WANDVERKLEIDUNG M 1:20

INDEX	DATUM	NAME	ÄNDERUNGSVERMERK



PROJEKT  
**Hallenbad Ersatzneubau Witten-Annen**  
 Märkische Str. 11  
 58453 Witten

BAUHERR  
**Stadtwerke Witten GmbH**  
 Westfalenstr. 18-20  
 58455 Witten

ARCHITEKT  
 T. (0160) 2897167  
 E. Neuba+BAmmen@stadtwerke.de

ZEICHNUNG	ERSTELLDATUM	PROJEKTLEITUNG	GEZEICHNET	INDEX	MASSSTAB	ZEICHNUNGSNR.
HOLZINNENVERKLEIDUNG SCHWIMMHALLE	18.07.2025			1	1:50/1:20	WD 04.05

ANSICHT M 1:50 / SCHNITTE M 1:20

H/B = 420 / 1290 (0,54m²)

Alplan 2024